



ADVICE FOR RESIDENTS

Householders are legally responsible for all household waste produced on their property. Most household waste can be disposed of in your bags or wheeled bin.

If you need to dispose of large items such as sofas, fridges there are several ways to do this legally .

- ❖ Take large items to your council run tip . Find out about opening times on line.
- ❖ Consider hiring a skip .They can be value for money and you don't need a permit if its on your own property.
- ❖ Leicester city council can dispose of your large waste items as part of the bulky waste collection service .
- ❖ You can subscribe to a garden waste collection for an annual fee.

Find out more at
www.lesswaste.org.uk

Advice for businesses

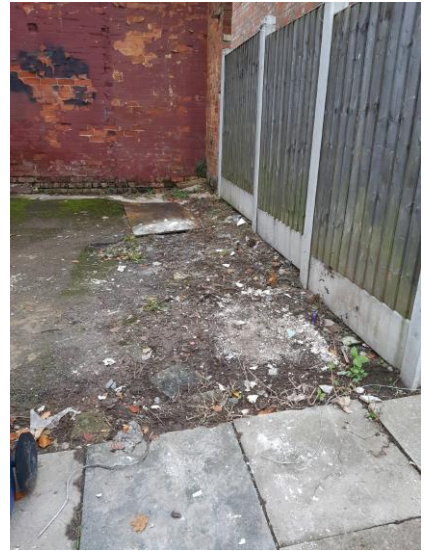
- Under the Environmental Protection Act, every business has a duty of care when it comes to dispose of it's waste. If you are not meeting your legal responsibilities it could result in a fine or imprisonment.

Here are a few tips

- It is a legal requirement for businesses to use a licensed waste carrier to remove their waste –check they are registered.
- If you run a business from home you will still need to dispose of your waste correctly - you should not use you home waste collection.
- Provide a written description of your waste to the company collection your waste
- Keep signed copies of transfer notes for 2 years .
- Take action if you think your waste is being mishandled by those who remove it you could be fined if your waste is fly tipped.

Find out more by visiting
www.rightwasterightplace.com

UP DATES



Before and after photos of waste removed from a property on Bramley road after owners were sent community protection warning .



Fly tipping on Beatrice road
The people responsible was interviewed and they explained the situation and we were able to sort a bin out and arrange for them to have orange bags .i have had no reports of any waste being left since.

CITY WARDEN SERVICES



LOVE WHERE YOU LIVE



Rubbish removed from back garden on Woodgate .

6 fly posters removed and fixed penalty notices issued

In September 23 Businesses were visited in relation to their waste duty of care

I am continuing with the Bins on the streets trying to remove as many bins As possible off the street and only out on collection day

CITY WARDEN SERVICES



Email: city.warden@leicester.gov.uk

Website: www.leicester.gov/myaccount



Facebook:
Leicester city wardens



Twitter:
City wardens

These are the main issues that the City Wardens can help with:

- Educating the public and raising awareness of environmental crimes

Enforcement work on the following issues:

- Littering
- Dog fouling, dogs on leads, dogs exclusion from land
 - Bins on the street (domestic and commercial)
- Free distribution of printed material
 - Fly posting
 - Small scale fly tipping
 - Graffiti
- Vehicles for sale on the road
- Repairing vehicles on the road
- Failure to produce waste transfer documents
 - Skips and scaffolding
- Rubbish on private land

FOSSE WARD



CITY WARDENS WORKING WITH YOU TO IMPROVE THE CITY'S ENVIRONMENT